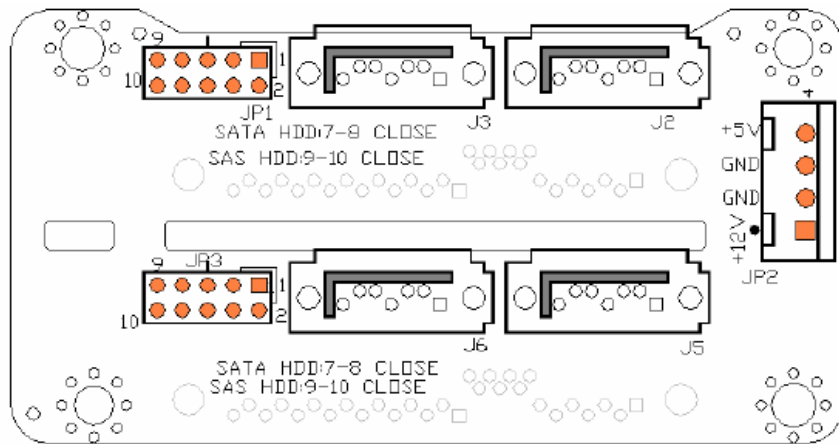


2.5" HDD 2Bay SAS Backplane

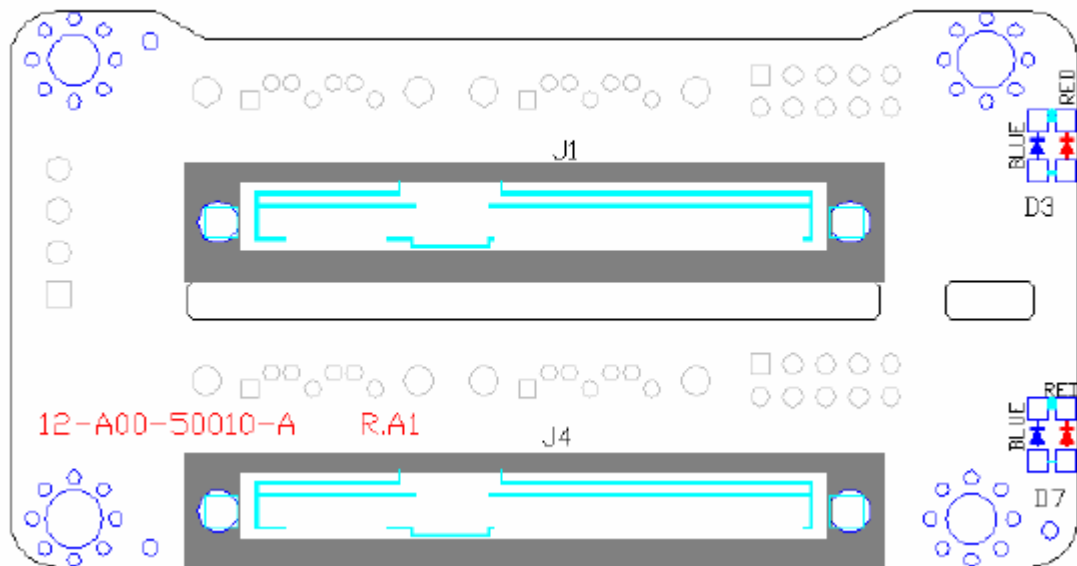
BKP-SAS3-2XSFF-R



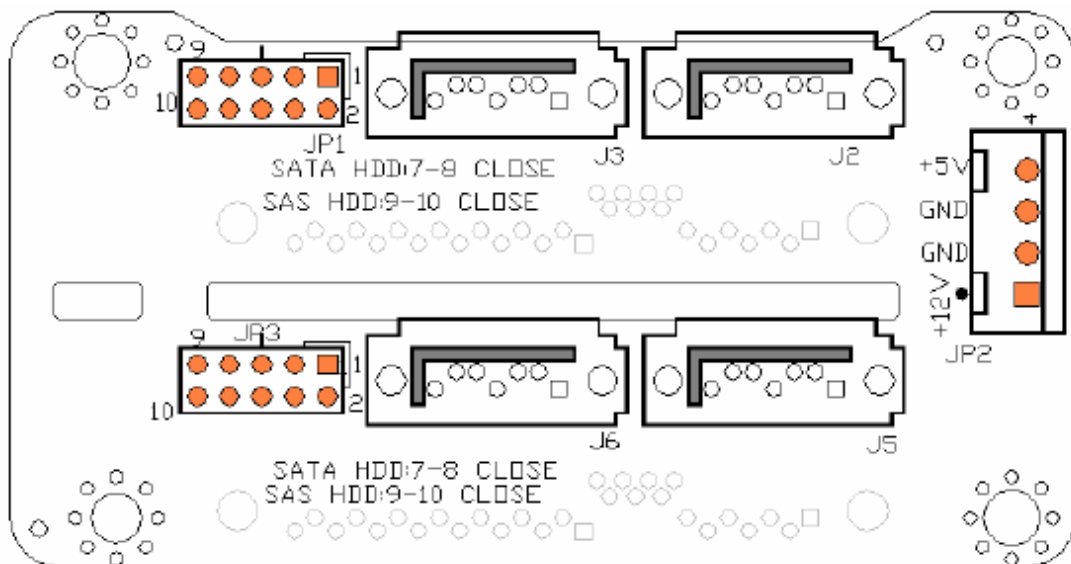
Instruction Guide

Instructions Manual

HDD side



HDD interface side



D3: HDD1 Status LED (Dual color Blue/Red)

Blue Turn on when HDD has been installed and blinking when HDD is accessing

Red LED turn on when HDD Fail Input pin (JP1 pin2) is Low level

D7: HDD2 Status LED (Dual color Blue/Red)

Blue Turn on when HDD has been installed and blinking when HDD is accessing

Red LED turn on when HDD Fail Input pin (JP3 pin2) is Low level

J2: SAS HDD1 Port A and/or SATA HDD Port

J3: SAS HDD1 Port B

J5: SAS HDD2 Port A and/or SATA HDD Port

J6: SAS HDD2 Port B

JP1: HDD1 Status LED I/O and HDD type select

JP1[1,3,5]: External LED for bi-color LED

Pin 1 – Fail LED(-)_Red LED

Pin 3 – LED(+)

Pin 5 – Access LED(-)_Blue LED

JP1[2]: HDD fail input (Active Low)

JP1[4]: GND

JP1[6]: HDD Access LED input (Active Low)

JP1[7,8][9,10]: HDD Type select

7,8 – Close SATA HDD

9,10 – Close SAS HDD

JP3: HDD2 Status LED I/O and HDD type select

JP3[1,3,5]: External LED for bi-color LED

Pin 1 – Fail LED(-)_Red LED

Pin 3 – LED(+)

Pin 5 – Access LED(-)_Blue LED

JP3[2]: HDD fail input (Active Low)

JP3[4]: GND

JP3[6]: HDD Access LED input (Active Low)

JP3[7,8][9,10]: HDD Type select

7,8 – Close SATA HDD

9,10 – Close SAS HDD

** If set to wrong HDD type the HDD Access LED will Active in reverse status.*