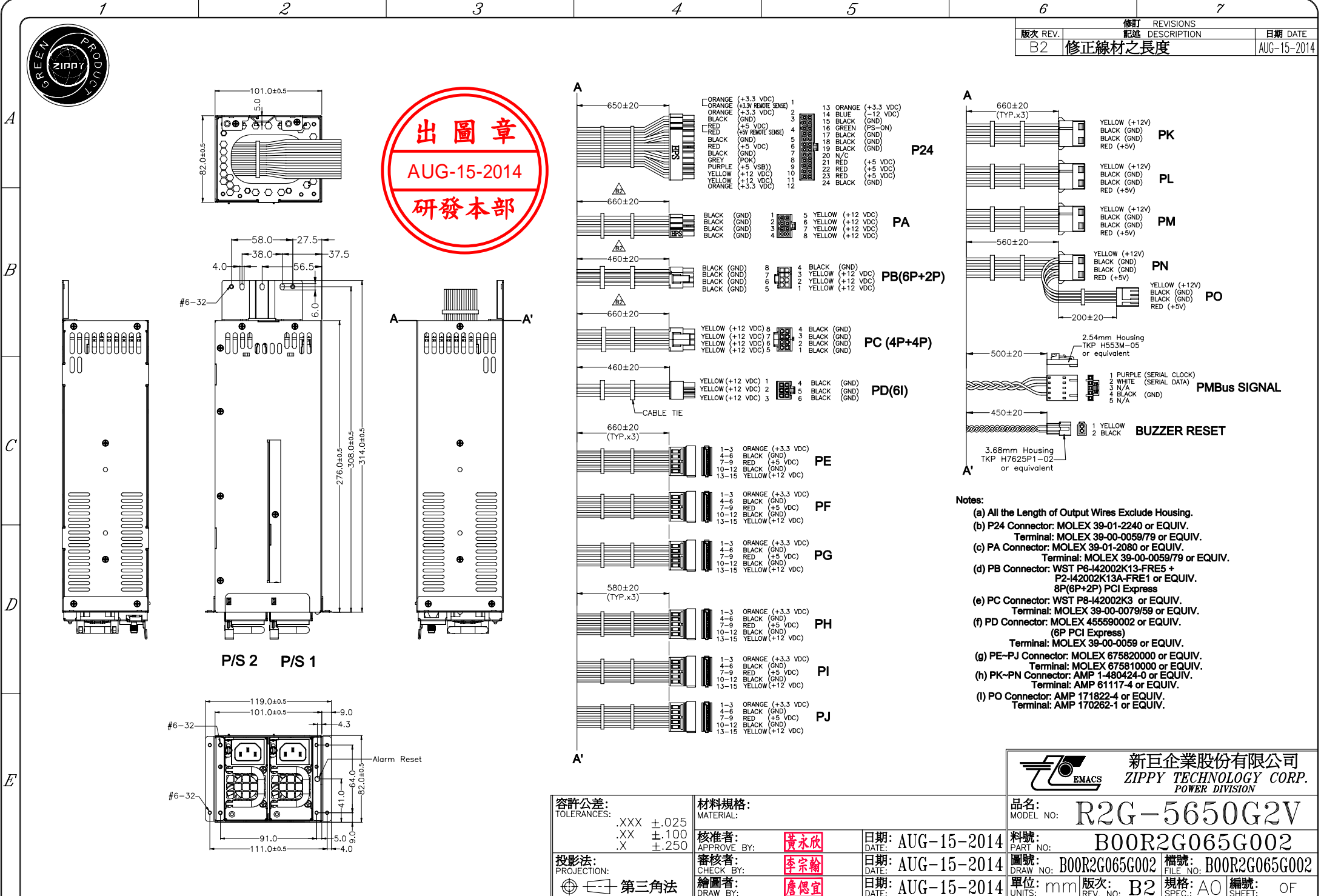




REV. 修訂		REVISIONS	
版次 REV.	描述 DESCRIPTION	日期 DATE	
B2	修正線材之長度	AUG-15-2014	



- Notes:**
- (a) All the Length of Output Wires Exclude Housing.
  - (b) P24 Connector: MOLEX 39-01-2240 or EQUIV. Terminal: MOLEX 39-00-0059/79 or EQUIV.
  - (c) PA Connector: MOLEX 39-01-2080 or EQUIV. Terminal: MOLEX 39-00-0059/79 or EQUIV.
  - (d) PB Connector: WST P6-I42002K13-FRE5 + P2-I42002K13A-FRE1 or EQUIV. 8P(6P+2P) PCI Express
  - (e) PC Connector: WST P8-I42002K3 or EQUIV. Terminal: MOLEX 39-00-0079/59 or EQUIV.
  - (f) PD Connector: MOLEX 455590002 or EQUIV. (6P PCI Express) Terminal: MOLEX 39-00-0059 or EQUIV.
  - (g) PE-PJ Connector: MOLEX 675820000 or EQUIV. Terminal: MOLEX 675810000 or EQUIV.
  - (h) PK-PN Connector: AMP 1-480424-0 or EQUIV. Terminal: AMP 61117-4 or EQUIV.
  - (i) PO Connector: AMP 171822-4 or EQUIV. Terminal: AMP 170262-1 or EQUIV.

容許公差: TOLERANCES:	材料規格: MATERIAL:	品名: MODEL NO:	新巨企業股份有限公司 ZIPPY TECHNOLOGY CORP. POWER DIVISION	
.XXX ±.025 .XX ±.100 .X ±.250	核准者: APPROVE BY:	R2G-5650G2V	料號: PART NO:	B00R2G065G002
投影法: PROJECTION:	審核者: CHECK BY:	日期: DATE:	圖號: DRAW NO:	槽號: FILE NO:
第三角法	繪圖者: DRAW BY:	AUG-15-2014	B00R2G065G002	B00R2G065G002
		AUG-15-2014	單位: UNITS:	規格: SPEC:
		AUG-15-2014	mm	A0
			版次: REV. NO:	編號: SHEET:
			B2	OF