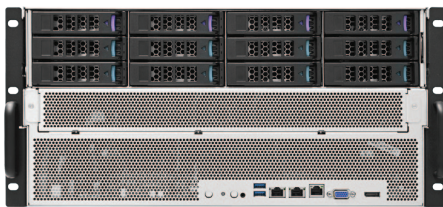




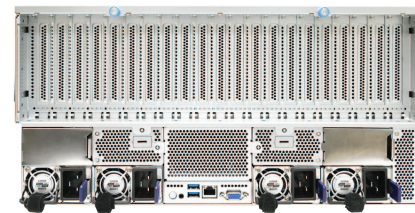
Front View



## Features

- 5U 8 GPU server supports maximum 8 dual-slot GPU cards with up to 600W each
- Supports dual AMD EPYC™ 9004/9005 SP5 CPU
- Supports 12 x DDR5 memory DIMM per processor
- 16000W (5+1 3200W modules) redundant power supply 80+ Titanium

Rear View



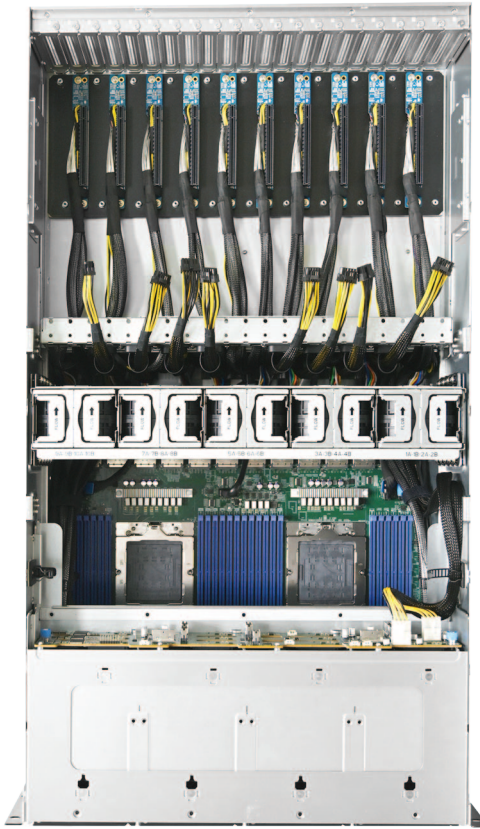
## Specifications

<b>Dimensions</b> (W x D x H)	mm : 435 x 831 x 218		
	inches : 17.1 x 32.7 x 8.6		
<b>Motherboard</b>	AIC Server Board Norma		
<b>Processor</b>	Processor Support	<ul style="list-style-type: none"> <li>• Dual AMD EPYC™ 9004/9005-series processor - Genoa/Turin</li> <li>• Supports CPU TDP 400W</li> </ul> <i>*Please contact AIC Technical Support for more info/details about optimized</i>	
	QPI Speed	32 GT/s xGMI	
	Socket Type	SP5	
<b>System Memory</b>	<ul style="list-style-type: none"> <li>• DDR5 4800 MT/s(1DPC) by Genoa;</li> <li>• DDR5 6000 MT/s(1DPC) by Turin</li> <li>• Total 24 memory slots; 12 channel per CPU (1DPC)</li> </ul>		
<b>Front Panel</b>	System power on/off, System reset, ID button		
<b>LEDs</b>	Power status, Drive activity, LAN activity, System alert, System ID		
<b>Drive Bays</b>	External	3.5" hot swap	12 Tri-mode
<b>Expansion Slots</b>	Rear PCIe 5.0	9 x16 FHFL, (21 slots space) (Cable CEM is flexibly applied depending on the dual slots or triple slots)	

<b>System BIOS</b>	BIOS Type	AMI UEFI BIOS
	BIOS Features	<ul style="list-style-type: none"> <li>• ACPI</li> <li>• PXE</li> <li>• WOL</li> <li>• AC loss recovery</li> <li>• IPMI 2.0 KCS mode interface</li> <li>• SRIOV</li> <li>• SMBIOS</li> <li>• TPM</li> <li>• Serial console redirection</li> <li>• PCIe hotplug</li> </ul>
<b>On-board Devices</b>	SATA	2 x SATA 7-pin
	IPMI	<ul style="list-style-type: none"> <li>• Aspeed AST2600 Advanced PCIe Graphics &amp; Remote Management Processor</li> <li>• Baseboard Management Controller</li> <li>• Intelligent Platform Interface 2.0 (IPMI 2.0)</li> <li>• iKVM, Media Redirection, IPMI over LAN, Serial over LAN</li> <li>• HTML5</li> <li>• Redfish</li> </ul>
	Network Controllers	<ul style="list-style-type: none"> <li>• Realtek RTL8211FS 1GbE for BMC dedicated management port</li> <li>• Broadcom BCM5720 dual port 1GbE (NCSI for share NIC)</li> </ul>
	Graphics	<ul style="list-style-type: none"> <li>• Integrated VGA support by ASPEED AST2600</li> <li>• Resolution up to 1920x1200 @60Hz 32bpp</li> </ul>



## Top View



(Power supply and Server board are included.)

<b>I/O</b>	LAN	<ul style="list-style-type: none"> <li>• 1 x RJ45 GbE connector for BMC dedicate management port</li> <li>• 2 x RJ45 1GbE connectors</li> </ul>
	USB	2 x USB 3.1 Gen1 Type-A
	Video Output	<ul style="list-style-type: none"> <li>• 1 x DB-15 VGA connector</li> <li>• 1 x Mini display port</li> </ul>
	Serial Port	1 x COM connector (Audio Jack)
	Others	Rear IO: <ul style="list-style-type: none"> <li>• 1 x DB-15 VGA connector</li> <li>• 2 x RJ45 1GbE connectors</li> <li>• 2 x USB 3.0 Type-A connectors</li> <li>• 1 x COM connector (Audio Jack)</li> </ul>
<b>Power Supply</b>	16000W (5+1 3200W modules) redundant power supply 80+ Titanium	
<b>System Cooling</b>	10 x 80x56mm hot swap fans	
<b>System Management</b>	<ul style="list-style-type: none"> <li>• IPMI 2.0</li> <li>• KVM over IP</li> <li>• Media redirection</li> <li>• Temperature, fan, voltage, PSU sensor monitor</li> <li>• System temperature</li> <li>• System ID / System fail indicator</li> <li>• Remote power on/off/reset</li> <li>• SEL message alarm through mail</li> <li>• SNMP support</li> </ul>	

<b>Environmental Specifications</b>	<ul style="list-style-type: none"> <li>• Storage temperature : -10°C(14°F) ~ 60°C(140°F)</li> <li>• Operating temperature : 0°C(32°F) ~ 35°C(95°F)</li> <li>• Storage operating humidity : 5%~95% non-condensing</li> </ul>	
<b>Gross Weight</b>	(w/ PSU & Rail)	kgs : 51.85
		lbs : 114.3
<b>Packaging Dimensions</b>	(W x D x H)	mm : 625 x 1130 x 430
		inches : 24.6 x 44.5 x 17
<b>Mounting</b>	Standard	37" tool-less slide rail