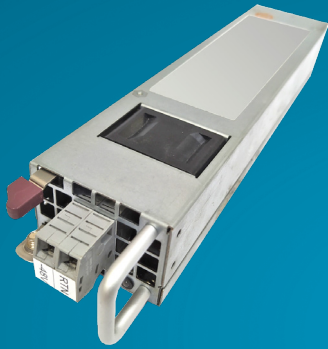


# CDR-6011-1M1

## 600W Slim Power Supply DC to DC Redundant

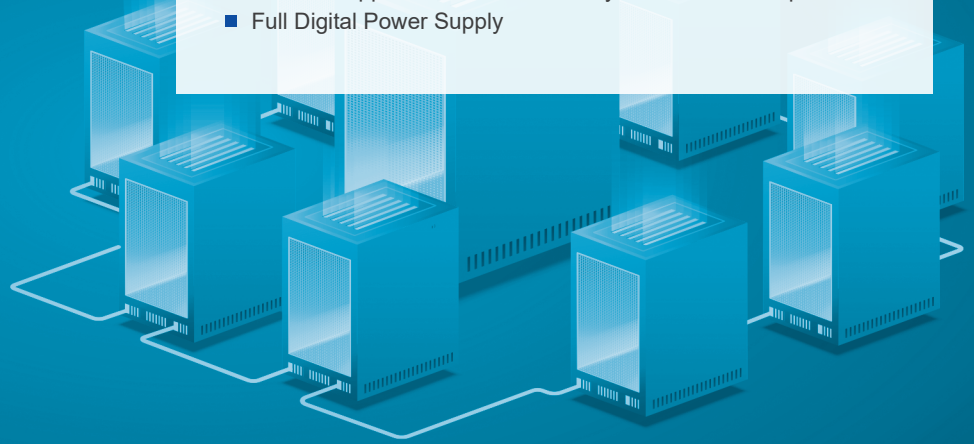


### FEATURES

- High Efficiency: 92%
- Hot Swappable
- PMBus Support
- Full Digital Power Supply
- Smart Fan Speed Control
- Active Power Factor Correction
- In-system Firmware Upload



■ Dimension : 220 x 54.5 x 40 mm (D x W x H)



## SPECIFICATIONS

▶ INPUT	
Voltage	-38 to -75Vdc
Frequency	47 - 63Hz
Current	18 - 10A

▶ EFFICIENCY	
Load (%)	Input -48Vdc
20%	88%
50%	92%
100%	90%

▶ OUTPUT		
Parameter	12V	5Vsb
Max Load	50A	3A
Regulation	±5%	±5%
Ripple & Noise	120mVp-p	50mVp-p

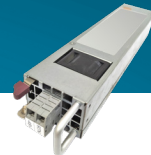
▶ PROTECTION, RELIABILITY, WARRANTY	
Over Current Protection (OCP)	
Over Power Protection (OPP)	
Over Voltage Protection (OVP)	
Over Temperature Protection (OTP)	
Short Circuit Protection (SCP)	
Holdup Time: 2msec @ 76% Load	
MTBF: >200,000hours @ 25 °C	
Warranty: 3 Years	

▶ ENVIRONMENTAL	
Temperature	Operating : 0 to 50°C Non-operating : -40 to 70°C
Altitude	Operating : to 16,500 feet (5,000 meters) Non-operating : to 35,000 feet (10,580 meters) Non-operating : to 10,580 meters
Relative humidity	Operating : 20% to 90% RH, Non-condensing Storage : 5% to 95% RH, Non-condensing

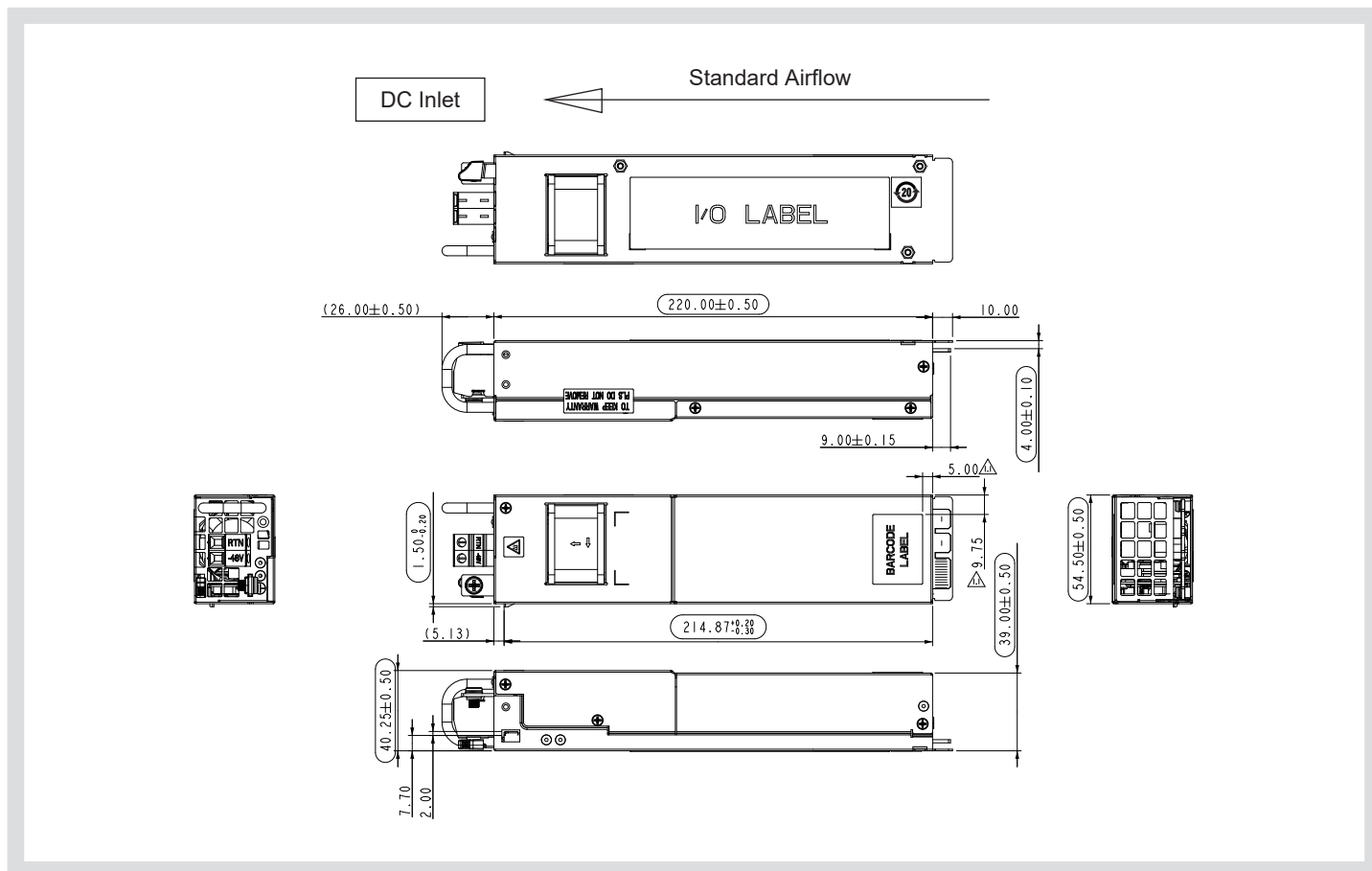
## SAFETY AND COMPLIANCE

UL, cUL, CE, CCC, BSMI, CB, FCC class A, CISPR Class A, RoHS

# CDR-6011-1M1



## MECHANICAL DRAWING



### CONNECTORS

DC Inlet	Terminal Block
DC Output	Gold Finger
DC Output Mating	Amphenol connector : GPCETR44042400213HR or ALLTOP

★ Product details and image are for reference and final product is subject to change without notice.

### OUTPUT CONNECTOR PIN ASSIGNMENTS

Bottom		Top	
PIN#	Signal Name	PIN#	Signal Name
S1	+12VRS+	S13	PDB_Fault
S2	+12VRS-	S14	Present
S3	12LS	S15	A0
S4	SMB Alert	S16	PDB_Alert
S5	SDA	S17	Reserved
S6	SCL	S18	Reserved
S7	PS_Kill	S19	Reserved
S8	PS_On	S20	Reserved
S9	PW_OK	S21	Wake up_Bus
S10	A1	S22	Vsenes-
S11	5V Standby	S23	5V Standby
S12	5V Standby	S24	5V Standby
P1	+12V	P3	GND
P2	+12V	P4	GND



Compuware Technology Inc.

Tel: 886-2-8226-3936 Address: 5F., No. 232, Liancheng Rd., Zhonghe Dist., New Taipei City 235, Taiwan (R.O.C.)



[www.compuware-us.com](http://www.compuware-us.com)