

NOTE:
 1 ENCLOSURE MATERIAL :
 SGCC G30(COMPLY WITH ASTM A653 G30).
 72 HOURS MINIMUM WHITE RUST PROTECTION IN
 SALT SPRAY (ASTM B117),MATERIAL MUST MEET
 DC RESISTANCE 0.1 OHMS MAX. FOR ELECTRICAL
 CONDUCTIVITY REQUIREMENTS
 機殼材質:
 SGCC(熱浸鋅鋼板)G30(符合ASTM A653 G30)
 至少72小時鹽霧防鏽處理(ASTM B117), 材料導電率DC阻
 抗需小於 0.1 OHMS MAX

2 ALL EXPOSED EDGES MUST BE MEET HANDLING
 REQUIREMENTS SPECIFIED IN UL 1439 AND DO NOT
 CUT THROUGH THE FIRST LAYER OF THE TESTER
 所有可能被觸碰的邊緣必須符合 UL1439 觸摸安全需求,
 不可以割破檢測物的第一層

3 FAI"Ⓢ", CPK"Ⓢ", "Ⓢ" CRITICAL DIMENSIONS MUST
 BE INSPECTED FOR EVERY SHIPMENT.
 FAI"Ⓢ", CPK"Ⓢ", "Ⓢ"表示該(尺寸/位置)為設計之重點尺寸
 而且可能會有變異,每次出貨前必須檢驗合格.

4 DO NOT ALLOW SCRATCH ON THE SURFACE. EXTRUDE
 PORTION SHOULD PREVENT THE DAMAGE OF THE ZINC
 PLATED LAYER AND OXIDATION
 表面不允許刮傷,抽孔/擠出成型部份也必須防止電鍍層有
 氧化現象

5 THE MANUFACTURER SHALL NOTIFY ACBEL PRIOR TO
 CHANGES IN MANUFACTURING LOCATION
 製造商如需變更製造地,需事先通知ACBEL

6 THESE MATERIAL/PART/ASSEMBLY MUST BE COMPLIED
 TO ACBEL SPEC "CRITERIA FOR ENVIRONMENT-
 RELATED SUBSTANCES"
 材質/零件/製程均必須符合康舒"環境管理物質規範"

7 ALL REF DIMENSIONS MUST BE COMPLIED TO
 MECHANICAL OUTLINE DRAWING REQUIREMENT
 所有參考尺寸必須符合MO實際組裝要求

8 BARCODE LABEL, WARNING LABEL AND INFORMATION
 LABEL SHOULD BE LOCATED ON NOTED SURFACE
 ,BEFORE ADHERING LABELS, SHEETMETAL SURFACE
 MUST BE FREE OF ANY GREASE, OIL AND DIRT
 標籤黏貼的位置如圖示.在黏貼前,金屬表面必須沒有任何的
 油污,油,或是塵土

9 GROUND SYMBOL Ⓢ MUST BE LOCATED TO THE
 PERMANENTLY MARKED NEAR PRIMARY GROUND
 CONNECTION.
 接地符號 Ⓢ 需永久的位於一次側接地處

10 MATERIAL THICKNESS: 0.7MM
 MATERIAL SUPPLIER
 PRIMARY SOURCE : CHINA STEEL
 ALTERNATE SOURCE :
 YIEH PHUI, BAO STEEL, WISCO
 材料厚度: 0.7毫米
 鋼板材料優先製造商:
 第一優先: 中鋼
 第二順位: 燁輝, 寶鋼, 武鋼

11 COVER , CHASSIS & SIDE PANEL MUST BE THE
 SAME COLOR UNLESS OTHERWISE SPECIFIED.
 除非有特別指示,否則上蓋、下蓋、邊板必須顏色一致

12 NET WEIGHT: 584 GRAMS ±3%
 淨重: 584 克 ±3%

13 RADUS SHOULD BE R0.5MM UNLESS OTHERWISE
 SPECIFIED.
 未標示R角皆為0.5mm.

14 SPOT WELDING & RIVETS MUST BE ABLE TO
 WITHSTAND A PULLING FORCE OF 20Kgf-cm MIN.
 焊接或鉚接強度需大於20Kgf-cm的拉力

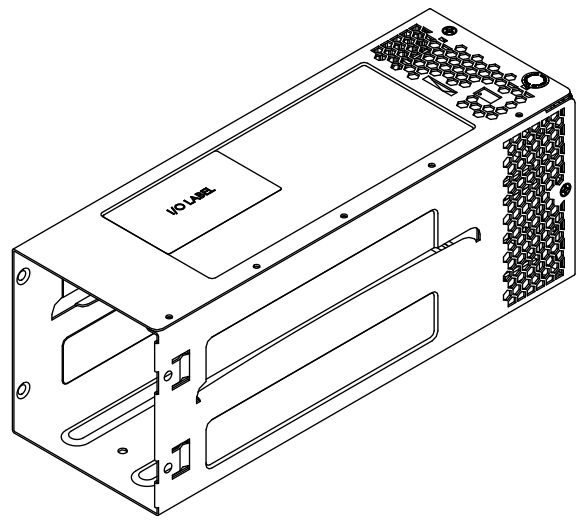
15 UNIT : MM
 單位: 毫米

16 NONE-SPECIFIED DIMENSIONS MUST BE COMPLIED
 TO 3D MODEL.
 未標示尺寸必須符合3D模型要求.

17 SCREW THREAD MUST BE WITHSTAND THE
 FOLLOWING TORQUE INDICATED :
 螺紋鎖付扭轉抗力需大於下列數值:
 M3 * 0.5 12Kgf-cm(MIN)
 M3.5 * 0.6 15Kgf-cm(MIN)
 #6-32 12Kgf-cm(MIN)

18 STUD AND CLINCH NUT MUST BE FLUSH ON THE
 NOTED SURFACE WHICH MUST BE CONFORM TO
 THE FOLLOWING TORQUE INDICATED :
 鉚接螺栓或螺帽,需符合下表扭力值:

THREAD CODE 螺紋編號	SHEET THICKNESS 板厚(MM)	SHEET MATERIAL 鋼板材質	
		HOT-DIPPED SHEET 熱浸鋼板	
		PUSHOUT 推出抗力 (Kg_MIN)	TORQUE OUT 扭轉抗力 (Kg_MIN)
M3 * 0.5	0.8 ~ 1.0	47	15
#6-32		50	18
M4 * 0.7		50	30



3	UPDATE P5~P8 CONN TYPE	08/30/21	LISHIN
2	UPDATE P7 CONN TYPE	08/25/21	LISHIN
1	PRIMARILY	08/11/21	MIA
REV	DESCRIPTION	DATE	BY

REVISIONS

AcBel ACBEL POLYTECH INC.	DRAWINGS & SPEC. ARE THE EXCLUSIVE PROPERTY OF ACBEL POLYTECH INC. SAID ITEMS ARE ISSUED IN STRICT CONFIDENTIAL	MODEL NO : FSL025-4QBG
		PART NO. : MO-FSL025-4QBG
		DWG NO. : MO-FSL025-4QBG_2

TOLERANCES UNLESS OTHERWISE NOTED
 0~8: ±0.1, 8~120: ±0.2, 120~315: ±0.3,
 315~>80.5: ANGLES: ±0.2

TITLE : MECHANICAL OUTLINE	
DESIGNER	Lishin 08/25/21
CHECKED	
APPROVED	Ray 08/25/21

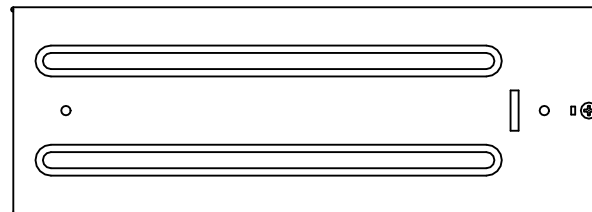
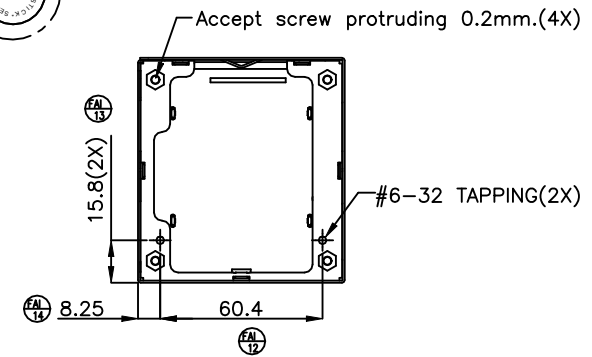
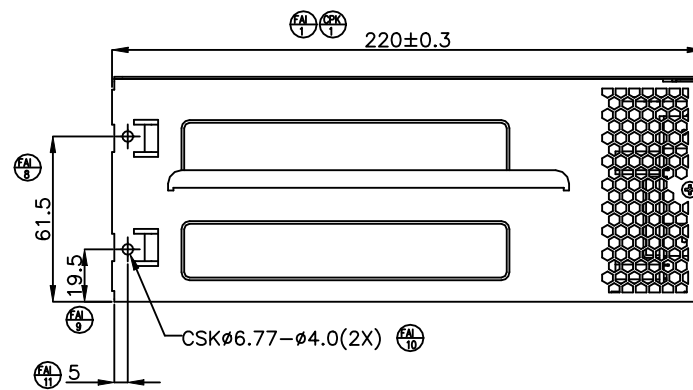
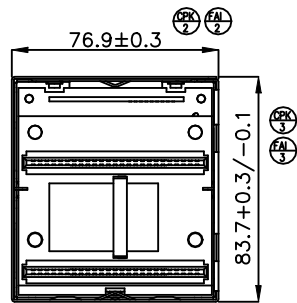
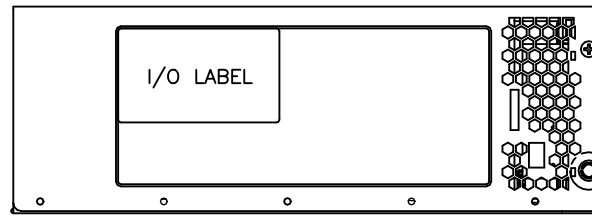
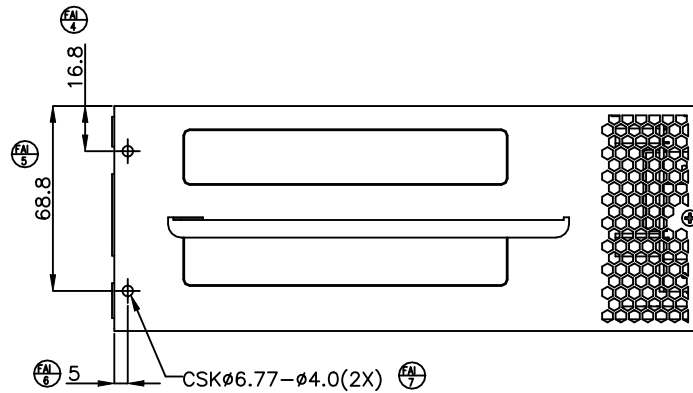
NON-RELEASE

試作圖面	REV: 2
ENG. Lishin	APPR.
QTY	DATE 08/25/21

注意: 此圖面僅供試產使用,
量產請以資料室正式發行圖面為準.

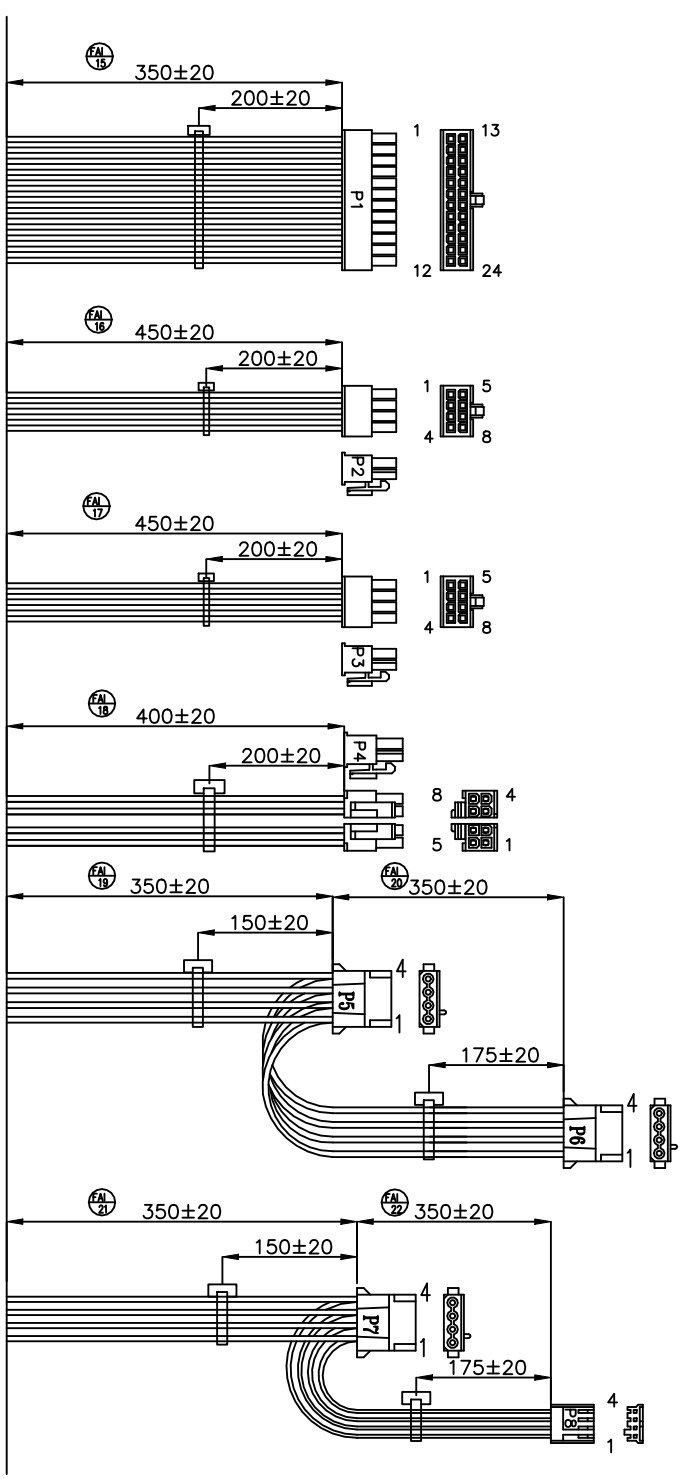
SCALE : 1:1 SHEET 1 OF 3

THIRD ANGLE PROJECTION



NON-RELEASE			
試作圖面	REV: 2		
ENG. Lishin	APPR.		
QTY	DATE 08/25/21		
注意: 此圖面僅供試產使用, 量產請以資料室正式發行圖面為準。			

 ACBEL POLYTECH INC. TOLERANCES UNLESS OTHERWISE NOTED 0-8:±0.1, 8-120:±0.2, 120-315:±0.3, 315-∞:±0.5, ANGLES:±0.2	DRAWINGS & SPEC. ARE THE EXCLUSIVE PROPERTY OF ACBEL POLYTECH INC. SAID ITEMS ARE ISSUED IN STRICT CONFIDENTIAL	MODEL NO : FSL025-4QBQ PART NO. : MO-FSL025-4QBQ DWG NO. : MO-FSL025-4QBQ_2
	TITLE : MECHANICAL OUTLINE	
SCALE : 1:1 SHEET 2 OF 3	DESIGNER : Lishin 08/25/21 CHECKED : APPROVED : Ray 08/25/21	

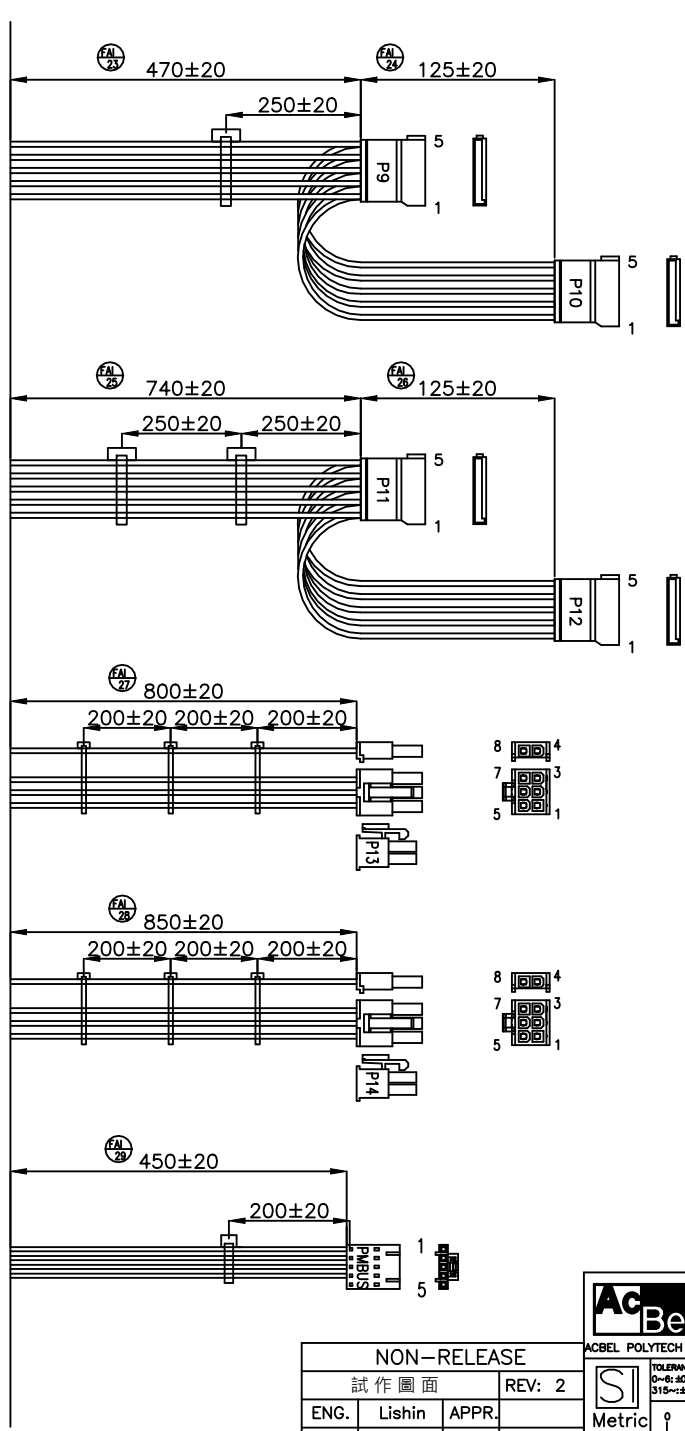


CONN.	PIN	OUTPUT	COLOR	AWG
P1 MIN-FIT 24PIN	1	+3.3V	ORANGE	18
	2	+3.3V	ORANGE	18
	3	GND	BLACK	18
	4	+5V	RED	18
	5	GND	BLACK	18
	6	+5V	RED	18
	7	GND	BLACK	18
	8	PW-OK	GRAY	24
	9	+5VSB	PURPLE	18
	10	+12V	YELLOW	18
	11	+12V	YELLOW	18
	12	+3.3V	ORANGE	18
	13	+3.3V	ORANGE	18
	14			
	15	GND	BLACK	18
	16	PS-ON	GREEN	24
	17	GND	BLACK	18
	18	GND	BLACK	18
	19	GND	BLACK	18
	20			
	21	+5V	RED	18
	22	+5V	RED	18
	23	+5V	RED	18
	24	GND	BLACK	18

CONN.	PIN	OUTPUT	COLOR	AWG
P2-P3 MINI-FIT 8PIN	1	GND	BLACK	18
	2	GND	BLACK	18
	3	GND	BLACK	18
	4	GND	BLACK	18
	5	+12V	YELLOW	18
	6	+12V	YELLOW	18
	7	+12V	YELLOW	18
	8	+12V	YELLOW	18

CONN.	PIN	OUTPUT	COLOR	AWG
P4 MINI-FIT 4+4PIN	1	GND	BLACK	18
	2	GND	BLACK	18
	3	GND	BLACK	18
	4	GND	BLACK	18
	5	+12V	YELLOW	18
	6	+12V	YELLOW	18
	7	+12V	YELLOW	18
	8	+12V	YELLOW	18

CONN.	PIN	OUTPUT	COLOR	AWG
P5-P7 HDD	1	+12V	YELLOW	18
	2	GND	BLACK	18
	3	GND	BLACK	18
	4	+5V	RED	18
P8 FDD	1	+5V	RED	22
	2	GND	BLACK	22
	3	GND	BLACK	22
	4	+12V	YELLOW	22



CONN.	PIN	OUTPUT	COLOR	AWG
P9-P12 SATA	1	+3.3V	ORANGE	18
	2	GND	BLACK	18
	3	+5V	RED	18
	4	GND	BLACK	18
	5	+12V	YELLOW	18

CONN.	PIN	OUTPUT	COLOR	AWG
P13-P14 PCI-E 6+2PIN	1	+12V	YELLOW	18
	2	+12V	YELLOW	18
	3	+12V	YELLOW	18
	4	GND	BLACK	18
	5	GND	BLACK	18
	6	GND	BLACK	18
	7	GND	BLACK	18
	8	GND	BLACK	18

CONN.	PIN	OUTPUT	COLOR	AWG
PMBUS	1	12CSCL	WHT/GRN	24
	2	12CSDA	WHT/YEL	24
	3	PS_Alert	WHITE	24
	4	GND	BLACK	24
	5			

NON-RELEASE
試作圖面
REV: 2
ENG. Lishin APPR.
QTY DATE 08/25/21
注意: 此圖面僅供試產使用, 量產請以資料室正式發行圖面為準.

AcBel ACBEL POLYTECH INC.
DRAWINGS & SPEC. ARE THE EXCLUSIVE PROPERTY OF ACBEL POLYTECH INC. SAID ITEMS ARE ISSUED IN STRICT CONFIDENTIAL.
TOLERANCES UNLESS OTHERWISE NOTED
0-8: .40, 1.6-1.20: .40, 2.120-3.15: .40, 3.315-80.5: .40, 5: .40, 2

MODEL NO: FSL025-4QBG
PART NO: MO-FSL025-4QBG
DWG NO.: MO-FSL025-4QBG_2
TITLE: MECHANICAL OUTLINE
DESIGNER: Lishin 08/25/21
CHECKED
APPROVED: Ray 08/25/21

SCALE: 1:1 SHEET 3 OF 3