

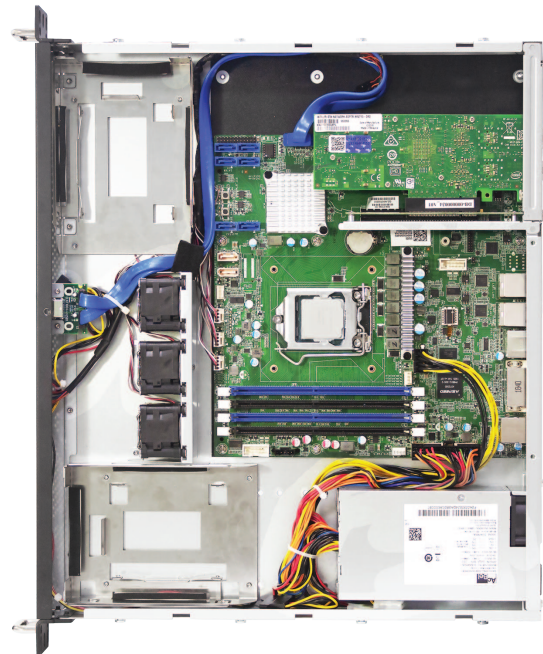
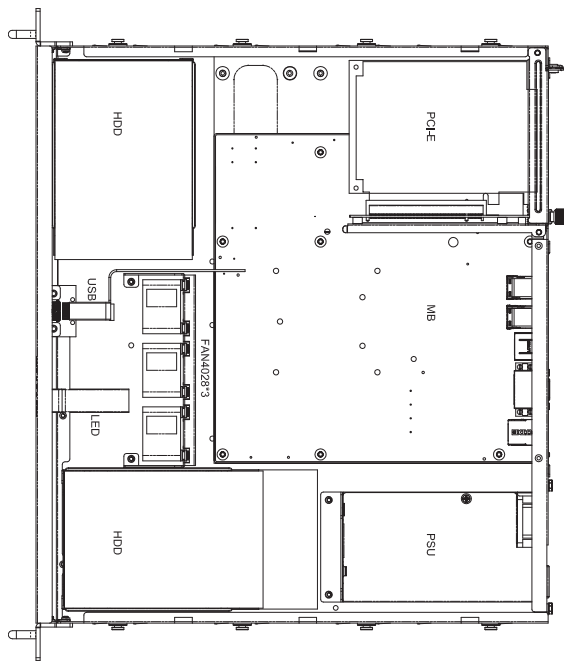
## RMC-1E

### Features

- Front ventilation for superior cooling
- Front access dual USB ports
- 3 x 4028 fans for CPU cooling
- Short-depth design for space critical application
- Equipped with 250W power supply



REAR VIEW



TOP VIEW

Power supply is optional. Motherboard is not included.

### SPECIFICATIONS

<b>Dimensions</b> (W x D x H)	mm : 427 x 381 x 44.4		
	inches : 16.8 x 15 x 1.75		
<b>Industry Standard</b>	EIA-RS310D		
<b>Material</b>	Heavy-duty preplated SPGC cold-rolled steel		
<b>Color</b>	Front Panel : Black		
<b>Cooling</b>	Standard	3 x 40x28mm fans	
<b>Power Supply</b>	Standard	250W single PSU	
<b>Expansion Slot</b>	1 full height via riser card		
<b>Front Panel</b>	System power on/off, system reset and 2 x USB ports		
<b>LED Indicators</b>	Power LED, HDD LED, LAN 1, LAN 2, alert LED		
<b>System Board</b>	Up to 12"(W) x 9.6"(D) ATX compliant MB		
<b>Drive Bays</b>	Internal	3.5"	2
		2.5"	2 (7mm SSD)

<b>Storage Temperature</b>	0°C(32°F) ~ 50°C(122°F)	
<b>Humidity</b>	5%~95% non-condensing	
<b>Gross Weight</b>	(w/ PSU; w/o Rail)	kgs : 7
		lbs : 15.4
<b>Packaging Dimensions</b>	(W x D x H)	mm : 548 x 574 x 173
		inches : 21.6 x 22.6 x 6.8
<b>Cubic Feet</b>	1.9	
<b>Container Load Quantity</b>	20'	500
	40'	1025
	40' H	1235
<b>Mounting</b>	Options	20"